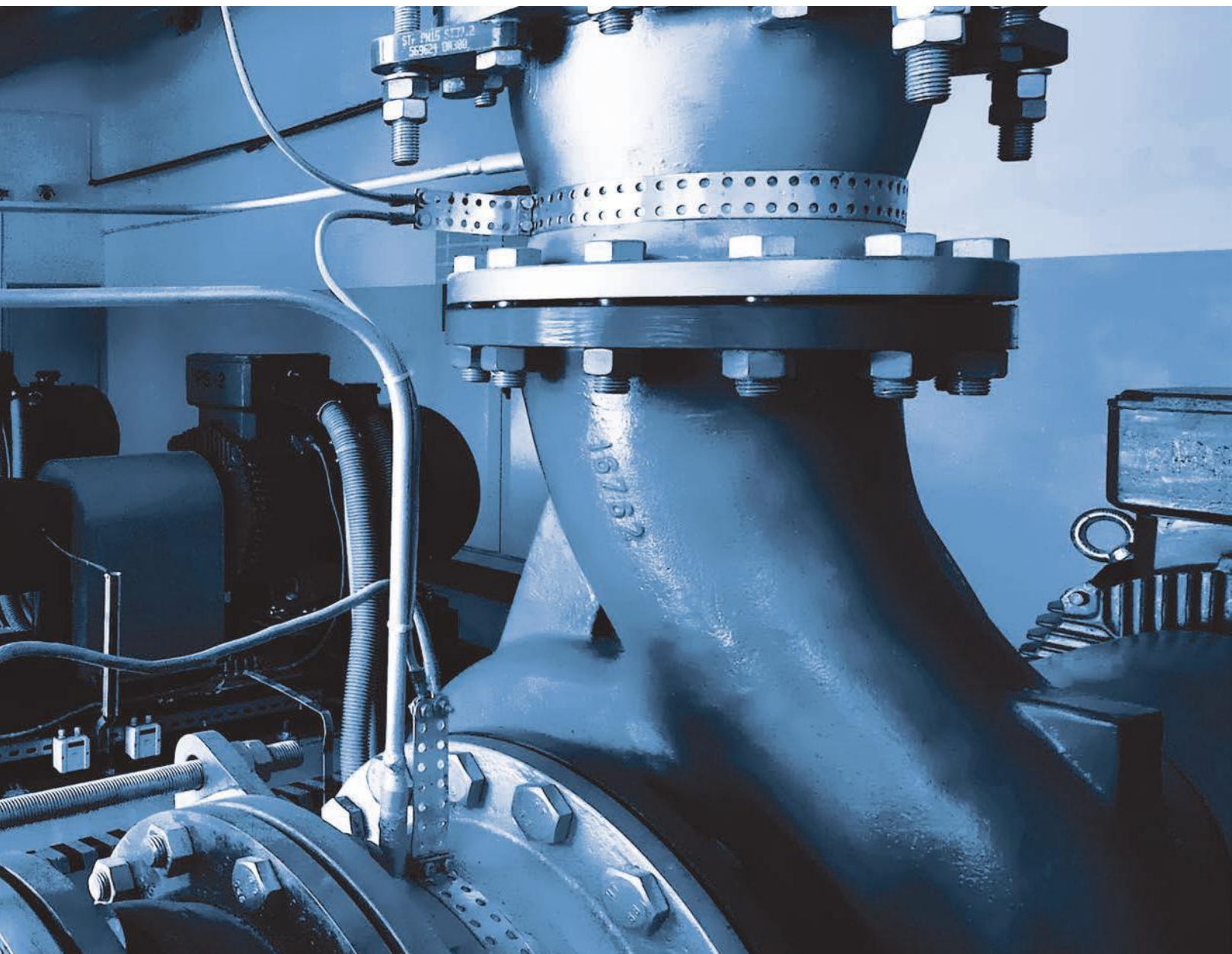




Grupa Powen-Wafapomp SA

# We know the business

Complete solutions  
in pumping technology



# We know the business

Our company was established as a result of a merger between the Warsaw Pump Factory [Warszawska Fabryka Pomp] and the Powen Pump Factory [Fabryka Pomp Powen]. We are a combination of the creativity of Warsaw and the Silesian reliability, based on 100 years of experience and an ambitious development

vision. We have been established to set new, better standards in the pumping technology. Our pumps are operated 1,000 metres underground, 10 metres under water, 1,500 metres above sea level, in the frosts of Siberia and the heat of India. We have supplied our pumps to a number of chemical works, tens

of power plants and mines, thousands of waterworks. All that is important, but what counts most is that the next pump to be delivered meets the requirements of our customer.

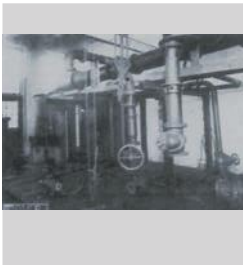
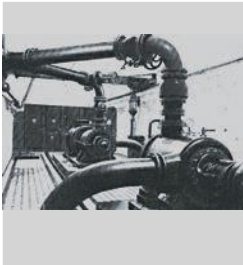
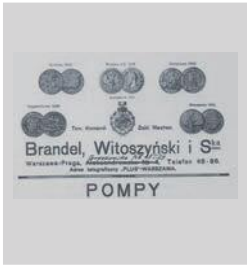




# We have been developing for you since 1908

As Prof. Czesław Witoszyński established the company in 1908 and designed the first Polish pumps in 1910 he did not suppose to have sown the seeds which would produce good yields for more than a hundred years.

Szczepan Łazarkiewicz, a co-author of the book titled „Impeller pumps” issued in 1959 and translated into several languages probably knew that, as the main factory designer, he was taking part in projects of great significance for both Polish and world economy.



**1908**

**1910**

**1922**

**1924**

Establishment of the company named Limited Liability Company of Mechanical Works Brandel, Witoszyński & Co seated in Warsaw.

Prof. Cz. Witoszyński designed the first centrifugal pumps of Polish design.

Manufacturing the first draining pumps for hard coal mines.

First pump testing station was opened in Warsaw factory.



**1970**

**1971**

**1977**

**1980**

**1998**

Launching the production of standard pumps of A series of type.

Launching the production of hydraulic transport pumps of PH & PG series of types.

Launching the production of high-pressure plunger pumps.

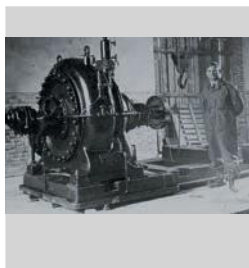
Launching the production of rubber-lining pumps for hydraulic transport, of MF series of type.

Launching the production of first process pumps of A-P series of type, compliant to API610.



Currently, though with 100 years of experience, we still find new challenges that we accept. Customers' requirements provide continuous inspiration for our designers.

This is how we participate together in further development of the pumping technique.



**1930**

Launching the production of double-suction pumps, N18SP type.



**1952**

First Polish-design submersible pumps of LW-50 type manufactured at Zabrze factory.



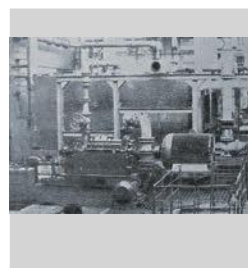
**1954**

Launching the production of D-type mixed flow pump.



**1959**

Publishing of „Impeller pump” written by Szczepan Łazarkiewicz, chief factory designer between 1922 and 1963, edited together with Prof. A. T. Troskoleński, translated into several languages and used by the students of technical universities.



**1966**

First Polish-design high-pressure supply pump of 15WWZ-35 type and condensate pumps designed by Szczepan Łazarkiewicz for Żerań CHP plant.



**2001**

Launching the production of multi-stage submersible pumps of OSZ, OWZ and OZ series of types.



**2006**

Merger between Wafapom SA and pump factories in Zabrze and Świdnica. Change of name to Grupa Powen-Wafapom SA.



**2009**

Launching the production of process pumps of A-P series of types compliant to 10th edition of API610.



**2012**

Implementation of multistage pumps M and H as well as submersible pumps SP.





Power industry  
and heat  
engineering



Mining



Chemical and  
petrochemical  
industries



Water and  
sewage  
treatment

We have experience in providing solutions for various branches of economy. Our competence is not just the production of pumps, but also understanding the specific needs of each industry. This helps us to act comprehensively.

We share our best knowledge with our customers and offer vast array of services developed in pumping technique application.



Industry



Turn-key projects



Service

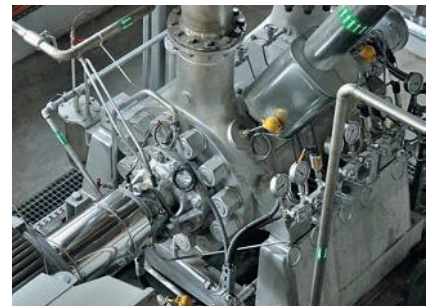


Repairs and spare  
parts



## Power industry and heat engineering

Constant flow of energy



Electricity is indispensable for modern society. It is obvious yet only few know how important pumps are in electricity generation process. To ensure continuous power supply they have to

work 24 hours a day, 7 days a week, for several tens of years. Nearly one hundred of power plants and CHP plants in Poland and abroad are equipped with pumps of Grupa Powen-

Wafapomp SA. Throughout many years of operation they have proven their reliability and electrical efficiency.

# Mining



Safety is mine

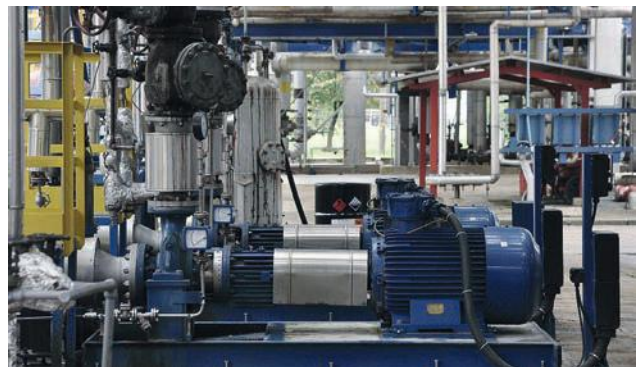


Hundreds of metres underground. Millions of cubic metres of chemically aggressive water coming out of the rocks. Safety of thousands of mine workers depends on the reliability of pumps. And our pumps never fail. More than 100 underground and open-pit mines are equipped with pumps supplied by Grupa Powen-Wafapomp SA. Thousands of our pumps used in underground and open-pit mines make the work of miners safer.

# Chemical and petrochemical industries



Pumps which „feel chemistry”



Fuels and chemicals are the blood of the modern economy. They are produced in systems equipped with hundreds of pumps which supply thousands of tonnes of toxic chemicals at extremely high temperatures

and pressures. Due to safety of people and equipment, and in view of environmental regulations they need to be extremely tight and reliable. Process pumps manufactured by Powen-Wafapomp SA are made according

to the recognized world standard of API 610 and have proven their reliability and high quality.





## Water and sewage treatment

---

### Pump in a teacup

---



Availability of clean water is something obvious for people of the civilized world. However, most of us do not realize that this is possible only thanks to very complex

pumping systems. From water intakes to water treatment plants and second stage pumping stations our pumps provide water for millions of people. At the same time our

pumps which operate in transport systems and waste water treatment plants enable water to be recycled into the environment without harm.



## Industry

---

### Our pumps can do it

---



Metallurgy, sugar industry, brewing industry, cement plants, papermaking industry. Tens of other industries, specific requirement, thousands of combinations of parameters. They all have one thing in common: pumps of Grupa Powen-Wafapomp SA are well proven in all those applications. General purpose and robust design of our pumps make them suitable for different industries and our designing capabilities allow adaptation of solutions to specific requirements.



# Turn-key projects



Sign and press “START”



The turn-key project formula answers the demand for comprehensive customer service, particularly in large-scale investment projects. This is how we become a partner in project execution. Our turn-key project offer includes assessment of system condition, development of design and execution of work in all areas, modernization or installation of new, complete pumping systems including adjustment, control and control & measurement instruments and automation. We supervise start-up and test operation.

Each of turn-key projects conducted by us was tailored to individual customer's requirements (e.g. system modernization during continuous operation, special pump versions, provision of solutions to optimize system operation in terms of cost-efficient and effective operation). We respond to the demand for comprehensive management of investment projects with particular attention to solutions which provide savings in operation. A turn-key project conducted in a proper and well thought out manner will ensure significant and measurable reduction of power consumption.

# Service



Always at your disposal



The service personnel of Grupa Powen-Wafapomp SA are always at your disposal. Mobile service teams can perform their job not only all over Poland but also anywhere in the world. Professional skills and dedicated equipment are a guarantee of high quality of the services offered. Our team of professionals undertakes a number

of challenges every day to ensure smooth operation of various industrial systems. Our services include warranty and post-warranty repairs, supervision of installation and commissioning of new systems, full diagnostics with the use of professional measuring instruments, standard and non-standard maintenance and repairs.



## Repairs and spare parts

Long-lasting quality - clear profit



Pump purchasing cost is merely a fraction of the entire pumping operation cost. Since a well-manufactured pump can be used as long as tens of years, the major cost are those of water and electricity consumed

and repair. Both cost types are associated to each other as the power efficiency of a pump depends on repair quality. Pumps we manufacture are never „disposable” and pump selection should be an optimum

solution in the long run. Pump maintenance costs are reasonable. Repairs carried out by us guarantee that the pumps are restored to proper condition. End users of our pumps are never left alone with maintenance problems.

## Experience in innovation



We have made significant contribution to development of world pumping technique. We have created our own designs and designing methods. However, our experience is much more than just a comprehensive product catalogue. It is the skills that we use every day to create new solutions to respond to the current and future market requirements. This is why we can offer modern products developed and tailored to individual needs of our customers. Just like thousands of our pumps which have been operated efficiently in a number of pumping systems.



# From the design to the product - the entire process in our hands



We vouch for our products. We make them ourselves throughout all the stages starting from the design to technology development, fabrication of components, processing, assembly, testing and installation at customer's site. The entire

process is conducted by our professionals of two manufacturing plants located in Warsaw and Zabrze, covering a total area of 35,000 m<sup>2</sup> equipped with modern machinery and technologies. Quality and safety of each pump is primarily determined

by cast components. We own a specialized metallurgical plant with fully equipped pattern shop facility which employs modern casting technologies and qualified casting personnel with many years of experience.



We make continuous investments in development and ergonomics of our employees. The machining of pump components and assembly of finished machines is a very precise process. It requires experience, attention and

excellent team work. Where tolerance is measured in tiny fractions of millimetre no slapdash is allowed. To guarantee the highest product quality for our customers we use our own, well-equipped pump testing stations including computer-based

measuring instruments to allow the end users to check the parameters of the pumps ordered. Once the product is accepted, our service personnel will ensure professional installation at the requested location. Pumps of Grupa Powa-Wafapomp SA are



[www.powen.eu](http://www.powen.eu)

